

## VENUE TECHNICAL SPECS

### CONFERENCE ROOM



Total area	190 m <sup>2</sup> (14,5x12,5m)
Technical area	9 m <sup>2</sup>
Height of the room	3,30 m

#### Capacities

Standing layout : 250 pax

Seating layout : 180 pax (theatre)

#### Power supply

Single phase 3 x 2 PC 16A

Three phase 1 x P17 32A

#### Video

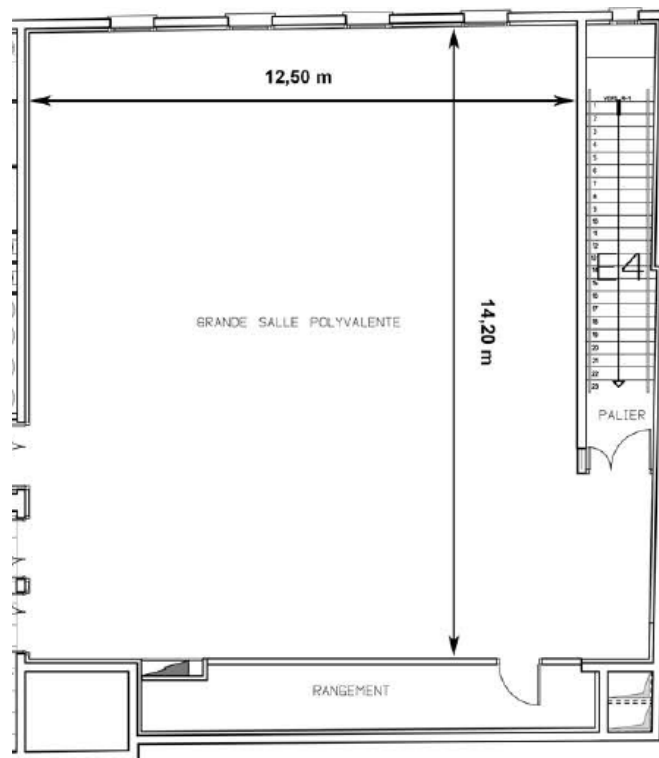
Videoprojector :

1 x NEC M420X (4200 lumens, full HD, compatibility 1920 x 1080 pixels max)

#### Audio

Mixing console : 1 x console Yamaha MW12C

PA system :  
 2 x amplified speakers Funktion One F81  
 1 x ampli Crown Audio 1200 XTi Series  
 1 x equalizer dbx iEQ-31



# VENUE TECHNICAL SPECS

## MOBILE EQUIPMENT

### Scène

6 x proscenium (2x1m), 30 kg, adjustable height from 0,20 to 1m, 750 daN/m<sup>2</sup> max - rental

### Son

2 x wireless handheld microphones Sennheiser eW100 G3

### Lighting

2 x pars Oxo Colorbeam Led Fcw IR

2 x pars Oxo Colorbeen 150 BFX

8 x pars Oxo Minibeam Led Fcw IR